

LG MAGNIT

Create Lasting Impressions

Inspire guests, customers, and viewers with soul-stirring Micro LED Displays.



What's Inside

The LG Micro LED Difference

Control Rooms

Corporations

Luxury Retail

Broadcast & Virtual Production

Home Cinema

Hospitality

Product Lineup

Innovation that Moves You

LG MAGNIT displays elevate any space with eye-popping, soul-stirring visuals to create an elegant, enriched environment that creates a lasting impression. Whether you're welcoming guests to the hotel lobby, presenting in a board room, filming in a virtual production studio, analyzing data in a control room, or watching the latest release in your home cinema, your display technology matters. Don't just deliver a message or provide entertainment—inspire awe and wonder.

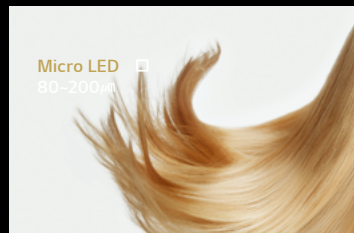
The LG MAGNIT Micro LED Difference

Featuring LG's advanced Micro LED technology, our displays bring your message to life in mesmerizing, brilliant color and true black. Immerse viewers in every ultra-fine detail and data point with technology engineered in perfect harmony to transform any space.



Micro Pixel Pitch Technology for Visual Precision

LG Micro Pixel Pitch Technology offers unmatched visual precision. Our advanced LED chips provide accurate details and precise light control, delivering crystal-clear images on any display. With vivid color expression, every hue is rendered with stunning clarity and depth, providing a true-to-life visual experience.



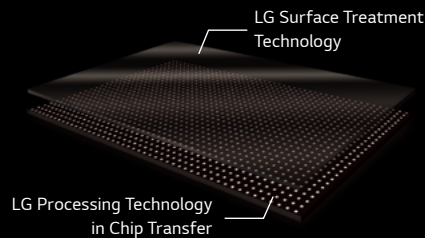
Black Coating Technology for Deeper Black

LG MAGNIT Micro LED displays feature micro-sized chips directly bonding onto circuit boards, combined with Black Coating Technology, to create stunning black compared to SMD-type LED displays. Combined with reduced spacing between the chips and the board, our Black Coating Technology delivers a deeper black than any other Micro LED display—the ideal choice for dark colored content, ensuring that every image is rich, vibrant, and true to life.



LG Surface Treatment (LST) Technology for Greater Uniformity

Our innovative Chip Transfer and Surface Treatment Technology enhances white uniformity and reduces color distortion from any angle, delivering true and accurate wide-angle viewing experiences. This technology ensures exceptional color superior image quality.



Alpha 7 Processor: AI-Powered Clarity

AI-powered Alpha 7 Intelligent Processors optimize clarity and sharpness to deliver the ultimate viewing experience. AI technology enables the processor to recognize and analyze content, tailoring the display settings for each individual scene to create the most lifelike, immersive image possible.

* Please note that some models may be equipped with Alpha 9 Processors

Expert Module Alignment for Captivating Detail

Experience the ultimate viewing experience with LG MAGNIT Micro LED displays' expert module alignment. By minimizing gaps between modules, the display delivers exceptional clarity and detail that captivates audiences. Even when viewed up close, the gaps are barely noticeable, providing a clear and consistent viewing experience with exceptional image quality.



LG MAGNIT Micro LED Displays for Intelligent, Inspiring Spaces



Control Rooms

In emergency situations, decisions must be made quickly with the most accurate information available. The LG MAGNIT Micro LED display ensures that everyone in the control room has the same precise view of important information, to facilitate quick and effective decision-making.

With its advanced technology, the LG MAGNIT Micro LED display minimizes image distortion from any angle, ensuring that every detail is presented clearly. Experience enhanced collaboration and efficiency with this exceptional display technology, enabling you to make better decisions when it matters most.



Corporations

In the boardroom, conference room, or executive business center, clear and effective communication is crucial for making informed decisions. LG MAGNIT displays provide exceptional picture quality to enhance communication, collaboration, and decision-making.

Meeting participants see vivid colors and crystal-clear images, enabling them to better contribute to the conversation. Experience a more effective and productive boardroom with our mega display's advanced technology.



LG MAGNIT Studio Series

Whether the studio application is virtual production, extended reality or simply broadcast content, LG MAGNIT offers a variety of models ready for use on-camera. By removing the package surrounding R, G, B LED chips and applying LG's own black coating technology, the LG MAGNIT Studio Series models provide a deep black and breathtaking high contrast ratio. And with HDR capability, high refresh rate and low latency video processing, the LG MAGNIT Studio Series supports broadcast-quality, providing vivid and smooth playback.

Luxury Retail

In the highly competitive retail environment, creating the perfect store atmosphere is critical to enhancing the customer experience and adding value to your products.

The LG MAGNIT display serves as an artistic centerpiece in your boutique, adding sophistication and modern sensibility to your space. With its exceptional performance and aesthetic design, the LG MAGNIT helps create a luxurious and modern vibe, enhancing the customer experience and adding value to your products.





Home Cinema

In luxury residential spaces, LG MAGNIT transforms the viewing experience, elevating homes to works of art with immersive, larger than life imagery that captivates the imagination. With its exceptional performance and aesthetic design, these mega-sized displays offer excellent clarity and vivid colors that bring every detail to life—an exhilarating cinematic journey previously only available at a theater.

Hospitality

Offering an elevated customer experience keeps guests coming back. Turn your hotel into more than a place for travelers to rest for the night. Transform it into a luxury destination with stunning **LG MAGNIT** displays that inspire awe and wonder from the exterior, to your casinos, lounges, and public spaces.

With exceptional picture quality and vivid colors, these luxurious displays serve as a centerpiece for displaying artwork, information or entertainment, creating a seamless, memorable guest experience.



Line Up

For Commercial



LSAB

P0.7 / 0.9 / 1.2

Corporate
Control Room
Retail
Education
Public

LSAQ

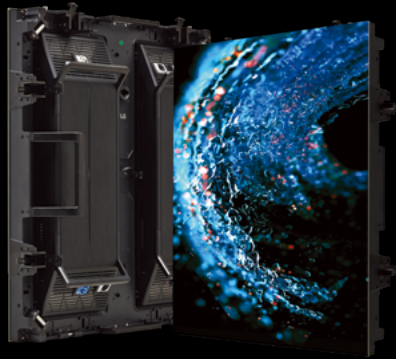
P0.9

VR and XR
Broadcast
Mini or Corporate Studios

For Commercial (LSAB / LSAQ)

| | | LSAB007 | LSAB009 | LSAB012 | LSAQ009 (Remote PSU) | |
|---|---|-------------------------------------|-----------------------------|-----------------------------|-----------------------------|----|
| Physical Parameters | Pixel Pitch (mm) | 0.78 | 0.94 | 1.25 | 0.94 | |
| | Module Resolution (W×H) | 192 × 216 | 320 × 120 | 240 × 90 | 320 × 120 | |
| | Module Dimensions (W×H, mm) | 150 × 168.8 | 300 × 112.5 | 300 × 112.5 | 300 × 112.5 | |
| | Weight per Module (kg) | 0.16 | 0.19 | 0.18 | 0.19 | |
| | No. of Modules per Cabinet (W×H) | 4 × 2 | 2 × 3 | 2 × 3 | 2 × 3 | |
| | Cabinet Resolution (W×H) | 768 × 432 | 640 × 360 | 480 × 270 | 640 × 360 | |
| | Cabinet Dimensions (W×H×D, mm) | 600 × 337.5 × 44.9 | 600 × 337.5 × 44.9 | 600 × 337.5 × 44.9 | 600 × 337.5 × 44.9 | |
| | Cabinet Surface Area (m ²) | 0.203 | 0.203 | 0.203 | 0.203 | |
| | Weight per Cabinet (kg/unit) | 7.6 | 7.0 | 7.2 | 6.4 | |
| | Weight per Square Meter (kg/m ²) | 37.5 | 34.6 | 35.5 | 31.6 | |
| | Physical Pixel Density (pixels/m ²) | 1,638,400 | 1,137,778 | 640,000 | 1,137,778 | |
| | Flatness of Cabinet (mm) | ± 0.5 | ± 0.5 | ± 0.5 | ± 0.5 | |
| | Cabinet Material | Die-casting Aluminum | Die-casting Aluminum | Die-casting Aluminum | Extrusion Aluminum | |
| Service Access | Front and Rear | Front and Rear | Front and Rear | Front and Rear | | |
| Optical Specifications | Max. Brightness (After Calibration, nits) | 500 / (Peak) 1,000 | 600 / (Peak) 1,200 | 800 / (Peak) 1,600 | 600 / (Peak) 1,200 | |
| | Color Temperature (K) | 3,200-9,300 / Default 7,300 | 3,200-9,300 / Default 7,300 | 3,200-9,300 / Default 7,300 | 3,200-9,300 / Default 7,300 | |
| | Visual Viewing Angle (H×V) | 150 × 150 | 160 × 160 | 160 × 160 | 160 × 160 | |
| | Brightness Uniformity | 95% | 95% | 95% | 95% | |
| | Color Uniformity | ±0.02 Cx, Cy | ±0.02 Cx, Cy | ±0.02 Cx, Cy | ±0.02 Cx, Cy | |
| | Contrast Ratio | 150,000 : 1 @ 10 lux | 100,000 : 1 @ 10 lux | 150,000 : 1 @ 10 lux | 100,000 : 1 @ 10 lux | |
| | Processing Depth (bit) | 20 (HDR10, HDR10 Pro) | 20 (HDR10, HDR10 Pro) | 20 (HDR10, HDR10 Pro) | 20 (HDR10, HDR10 Pro) | |
| | Electrical Specifications | Power Consumption (W/Cabinet, Max.) | 110 | 72 | 82 | 67 |
| | | Power Consumption (W/Cabinet, Avg.) | 65 | 47 | 50 | 40 |
| Power Consumption (W/m ² , Max.) | | 543 | 356 | 405 | 331 | |
| Power Supply (V) | | 100 to 240 | 100 to 240 | 100 to 240 | 48VDC | |
| Frame Rate (Hz) | | 50 / 60 | 50 / 60 | 50 / 60 | 50 / 60 | |
| Refresh Rate (Hz) | | 3,840 | 3,840 | 3,840 | 3,840 | |
| Operation Specifications | Lifetime (Half Brightness) | 100,000 | 100,000 | 100,000 | 100,000 | |
| | Operating Temperature (°C) | 0 to +40 | 0 to +40 | 0 to +40 | 0 to +40 | |
| | Operating Humidity | 10-80% RH | 10-80% RH | 10-80% RH | 10-80% RH | |
| | IP Rating Front / Rear | IP50 / IP20 | IP50 / IP20 | IP50 / IP20 | IP50 / IP20 | |
| Certification | EMC | Class B | Class B | Class B | Class B | |
| | Certification | BS476 Part7 Class2 | BS476 Part7 Class2 | BS476 Part7 Class2 | BS476 Part7 Class2 (TBD) | |
| | Eye Comfort | - | - | - | - | |
| Compatible Controller | LG webOS / CSAB, CSAD | LG webOS / CSAB, CSAD | LG webOS / CSAB, CSAD | LG webOS / CSAB | | |

For Virtual Production



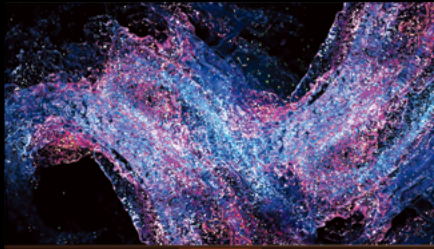
LBAF **LBAG** **LSAP** **LSAQ**
P1.5 P1.5 P0.9 P0.9

Virtual Production
Broadcast
XR (Extended Reality) Production

For Virtual Production

| | | LBAF015 | LBAG015 | LSAP009 | LSAQ009 | |
|---|---|-------------------------------------|----------------------------------|----------------------------------|-----------------------------|----|
| Physical Parameters | Pixel Pitch (mm) | 1.56 | 1.56 | 0.9375 | 0.9375 | |
| | Module Resolution (W×H) | 96 × 108 | 96 × 108 | 320 × 120 | 320 × 120 | |
| | Module Dimensions (W×H, mm) | 150 × 168.75 | 150 × 168.75 | 300 × 112.5 | 300 × 112.5 | |
| | Weight per Module (kg) | 0.15 | 0.2 | 0.19 | 0.19 | |
| | No. of Modules per Cabinet (W×H) | 4 × 4 | 4 × 4 | 2 × 3 | 2 × 3 | |
| | Cabinet Resolution (W×H) | 384 × 432 | 384 × 432 | 640 × 360 | 640 × 360 | |
| | Cabinet Dimensions (W×H×D, mm) | 600 × 675 × 79.8 | 600 × 675 × 125 | 600 × 337.5 × 44.9 | 600 × 337.5 × 44.9 | |
| | Cabinet Surface Area (m ²) | 0.405 | 0.405 | 0.203 | 0.203 | |
| | Weight per Cabinet (kg/unit) | 9.5 | 16.0 | 7.6 | 6.4 | |
| | Weight per Square Meter (kg/m ²) | 23.5 | 39.5 | 37.5 | 31.6 | |
| | Physical Pixel Density (pixels/m ²) | 409,600 | 409,600 | 1,137,778 | 1,137,778 | |
| | Flatness of Cabinet (mm) | ± 0.15 | ± 0.5 | ± 0.5 | ± 0.5 | |
| | Cabinet Material | Die-casting Magnesium Alloy | Die casting Magnesium alloy | Die casting Aluminum | Extrusion Aluminum | |
| Service Access | Rear | Rear | Front and Rear | Front and Rear | | |
| Optical Specifications | Max. Brightness (After Calibration, nits) | (Max.) 1,500 | Max. 1,500 | 600 | 600 / Peak 1,200 | |
| | Color Temperature (K) | 3,200-9,300 / Default 6,500 | 2,000-10,000 / Default 6,504 | 2,000-10,000 / Default 6,504 | 3,000-9,000 / Default 7,300 | |
| | Visual Viewing Angle (H×V) | 160 × 160 | 160 × 160 | 160 × 160 | 160 × 160 | |
| | Brightness Uniformity | ≥ 95% | 95% | 95% | 95% | |
| | Color Uniformity | ±0.015 Cx, Cy | ±0.02Cx, Cy | ±0.02Cx, Cy | ±0.02Cx, Cy | |
| | Contrast Ratio | 100,000 | 100,000 : 1 @10 lux | 100,000 : 1 @10 lux | 100,000 : 1 @10 lux | |
| | Processing Depth (bit) | Intel Processing 20 bit | 22 (HDR10, PQ, HLG) | 22 (HDR10, PQ, HLG) | 20 (HDR10, HDR10 Pro) | |
| | Electrical Specifications | Power Consumption (W/Cabinet, Max.) | 210 | 220 | 68 | 67 |
| | | Power Consumption (W/Cabinet, Avg.) | 175 | 175 | 47 | 40 |
| Power Consumption (W/m ² , Max.) | | 519 | 543 | 336 | 331 | |
| Power Supply (V) | | 100 to 240 | 100 to 240 | 100 to 240 | 48 V dc | |
| Frame Rate (Hz) | | 50 / 60 | 23.98/24/25/29.97/30/50/59.94/60 | 23.98/24/25/29.97/30/50/59.94/60 | 50 / 60 | |
| Refresh Rate (Hz) | | 7,680 | 3,840 | 3,840 | 3,840 | |
| Operation Specifications | Lifetime (Half Brightness) | 100,000 | Up to 100,000 hrs | Up to 100,000 hrs | Up to 100,000 hrs | |
| | Operating Temperature (°C) | 0 to +40 | 0 to +40 | 0 to +40 | 0 to +40 | |
| | Operating Humidity | 10-80% RH | 10-80% RH | 10-80% RH | 10-80% RH | |
| | IP Rating Front / Rear | TBD | N/A | IP50 / IP20 | IP50 / IP20 | |
| Certification | EMC | Class A | Class A | Class A | Class B | |
| | Certification | - | - | BS476 Part 7 Class 1 | BS476 Part 7 Class 1 | |
| | Eye Comfort | - | - | - | - | |
| Compatible Controller | | LG webOS / CSAB, CSAD | LG webOS / CSAB, CSAD | Megapixel VR / HEIOS | LG webOS / CSAB-00915D | |

For Residential



LSAD

P0.7 | 136" 4K

Residential
Hospitality

LSAL

P0.6

For Residential

| | | LSAD007 (136 Inch 4K) | LSAL006 |
|---------------------------|---|--|-----------------------------|
| Physical Parameters | Pixel Pitch (mm) | 0.78 | 0.68 |
| | Module Resolution (W × H) | 192 × 216 | 240 × 216 |
| | Module Dimensions (W × H, mm) | 150 × 168.8 | 163.2 × 146.88 |
| | Weight per Module (kg) | 0.16 | - |
| | No. of Modules per Cabinet (W × H) | 4 × 2 | 16 × 10 |
| | Cabinet Resolution (W × H) | 3,840 × 2,160 (Screen) | 3,840 × 2,160 |
| | Cabinet Dimensions (W×H×D, mm) | 3,010 × 1,732 × 57.7 (Screen, w/Bezel) | - |
| | Cabinet Surface Area (m ²) | 5.063 (Screen) | 3.84 |
| | Weight per Cabinet (kg/unit) | 200 (Screen) | - |
| | Weight per Square Meter (kg/m ²) | 39.5 | 141 |
| | Physical Pixel Density (pixels/m ²) | 4,915,200 | 21,626,29 |
| | Flatness of Cabinet (mm) | ± 0.5 | ± 0.5 |
| | Cabinet Material | Die-casting Aluminum | Die-casting Aluminum |
| Service Access | Front | Front | |
| Optical Specifications | Max. Brightness (After Calibration, nit) | 250 / (Peak) 2,000 | 250 |
| | Color Temperature (K) | 4,800-9,300 / Default 7,300 | 4,800-9,300 / Default 7,300 |
| | Visual Viewing Angle (H × V) | 150 × 148 | 160 × 160 |
| | Brightness Uniformity | 95% | 95% |
| | Color Uniformity | ±0.002 Cx, Cy | ±0.002 Cx, Cy |
| | Contrast Ratio | 150,000 : 1 @ 10 lux | 150,000 : 1 @ 10 lux |
| | Processing Depth (bit) | 20 (HDR10, HDR10 Pro) | 20 (HDR10, HDR10 Pro) |
| Electrical Specifications | Power Consumption (W/Cabinet, Max.) | 2,000 (Screen) | 1,470 |
| | Power Consumption (W/Cabinet, Avg.) | 1,500 (Screen) | 1,050 |
| | Power Consumption (W/m ² , Max.) | 395 | 383 |
| | Power Supply (V) | 100 to 240 | 100 to 240 |
| | Frame Rate (Hz) | 100 / 120 | 100 / 120 |
| | Refresh Rate (Hz) | 3,840 | 3,840 |
| Operation Specifications | Lifetime (Half Brightness) | 100,000 | 100,000 |
| | Operating Temperature (°C) | 0 to +40 | 0 to +40 |
| | Operating Humidity | 10-80% RH | 10-80% RH |
| | IP Rating Front / Rear | IP50 / IP20 | IP50 / IP20 |
| Certification | EMC | Class B | - |
| | Certification | - | CE, FCC, ETL, CB |
| | Eye Comfort | EyeComfort (TUV) | - |
| | Compatible Controller | LG webOS / MSAD-0072 | - |

Warranty: 3 year limited





-  @LG Commercial Displays USA
-  @LGCommDisplays
-  @LG Commercial Displays
-  @lgcommdisplays
-  LG Commercial Display USA
-  www.lg.com/us/business

© Copyright 2023 ©LG Electronics USA, Inc. All rights reserved. LG and the LG logo are registered trademarks of LG Corp. All other trademarks are the property of their respective owners. Prices, promotions, and availability may vary by dealer. The information contained herein is subject to change without notice. All screen images are simulated.